



A Virtual Conference presented by AIM & RAIN  
9 - 10 December 2020



**RAIN**<sup>®</sup>  
ALLIANCE



A Virtual Conference presented by AIM & RAIN  
9 - 10 December 2020

# Thank you to our sponsors



## Platinum

## Gold



## Silver



## SIMPLYRFID





Case Study:

*Using RAIN RFID Technology to Achieve Data-Driven  
Clinical Inventory Optimization*

December 2020

*Presented by Lana Makhanik, COO, [lmakhanik@vuemed.com](mailto:lmakhanik@vuemed.com)  
[www.vuemed.com](http://www.vuemed.com) - Seattle, USA*

## Cardiovascular Department of Loma Linda University Medical Center (LLUMC)



- 507-bed Academic Medical Center
- Part of Loma Linda University Health, a 6-hospital system
- >1.5 million annual outpatients
- Covers more than 25% of the state of California

LLUMC faced Core challenges that affected their ability to treat high acuity patients at lower costs:

- Fewer than 50% of patient cases had their supplies accurately documented
- More than 50% of items on-hand had no traceable purchase history
- Management of supplies was fragmented & siloed
  - Highly manual
  - No real-time visibility
  - High rates of wasted and unused items

Hands-free RAIN RFID powered by our optimization software has proven to excel at delivering on LLUMC's core goals (✓)

RAIN RFID excels at achieving:

Accurate & comprehensive data capture  
(lot/serial number, expiry date)



Full visibility, trackability,  
& management of all supplies

- from delivery to point of care
- with no needs for special cabinets



Optimization SaaS helps achieve:

Substantial ROI

- guided by powerful Cloud analytics
- focused on savings, waste avoidance and efficiency gains



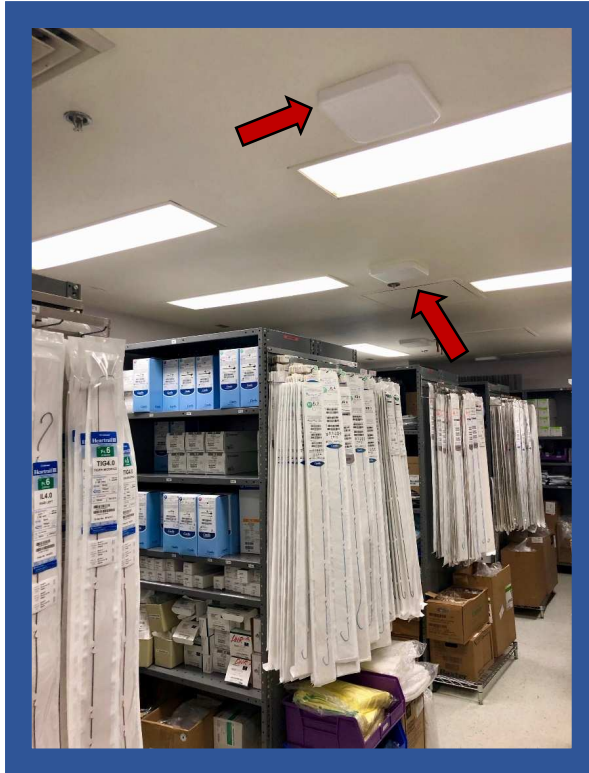
Inventory composition & size  
improvement, and reduction of product  
variation



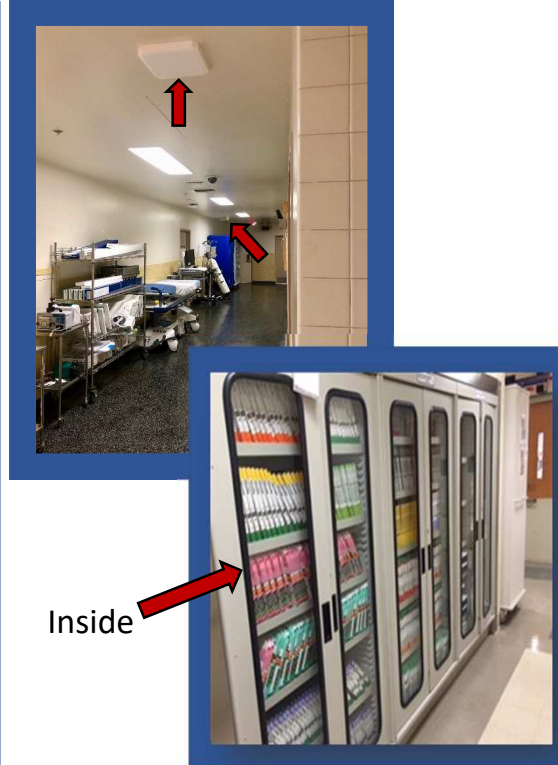


RAIN RFID tracks all supplies and reports all UDI data in real time for each individual item with its exact location, using strategically placed antennas to track UHF tags

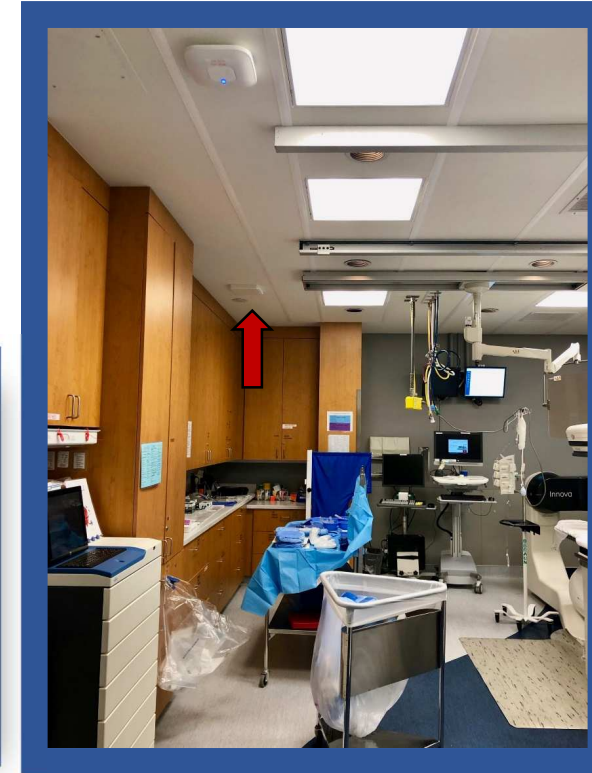
Supply Rooms



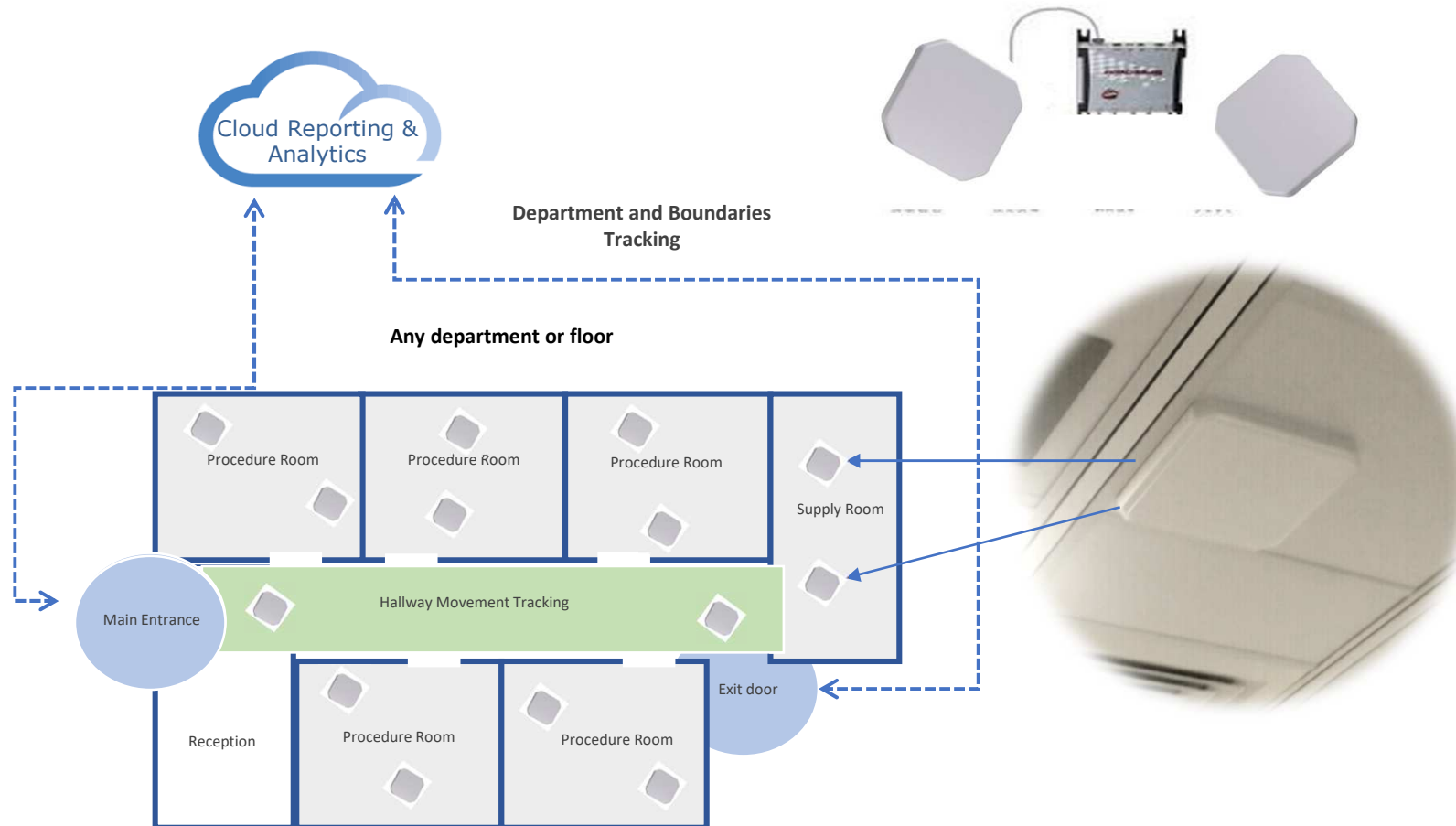
Hallways / Cabinets



Procedure Rooms



Tracks inventory in supply and procedure rooms, as well as movement throughout, and entry & exit from the department





## UDI Compliant RFID Tagging Solution

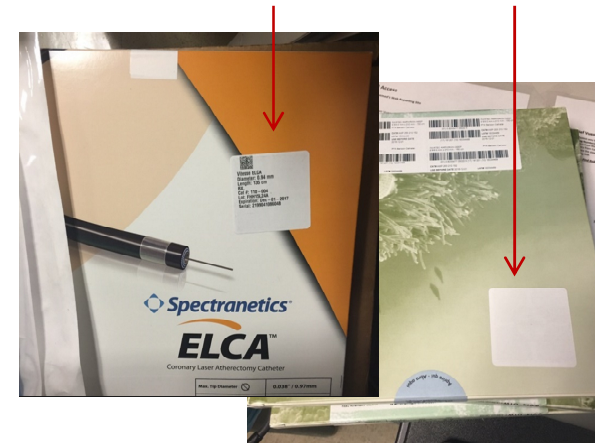
*FDA-mandated Unique Device Identifier (UDI) data is resident on the tag itself using GS1 EPC GEN2 UHF encoding standards*

### VUETRACK Tagging Station

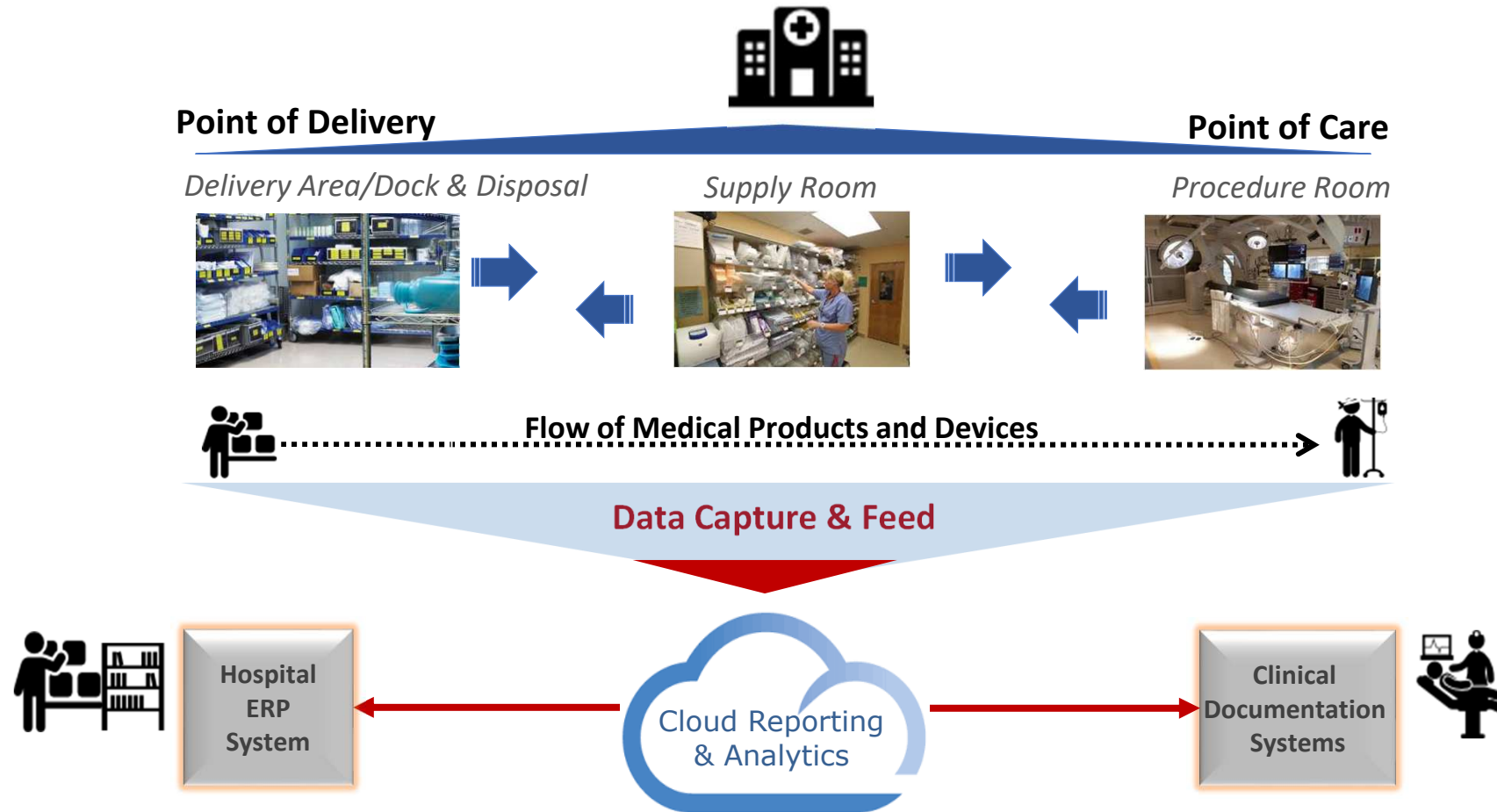


### Tag encoding

- Device Identifier
- Production Identifier Data as applicable:
  - Lot Number
  - Batch Number
  - Serial Number
  - Expiration Date
  - Manufacture Date
  - HCT/P ID
- The UDI-encoded RFID tag may be printed with human readable text and a 2D barcode or blank



RAIN RFID automates inventory management from delivery to point of care, and records all data to the Cloud for analysis and dissemination to other vital hospital systems



KPIs keep Supply Chain, IT and Finance informed and accountable while helping guide improvement opportunities, monitor performance, and measure savings

<u>Typical Sources of Savings:</u>		<u>Examples of KPIs Used include:</u>	<u>Frequency</u>
➤ Expiration control	➡	• <i>Expiring as % of total on-hand inventory: SKUs, Units, Value</i>	Monthly
➤ Inventory size reduction	➡	• <i>Unused or infrequently used in the last 12 months as % of total on-hand inventory: SKUs, Units, Value</i>	Quarterly
➤ Product purchase rationalization	➡	• <i>Purchased vs. consumed in relation to case volume: SKUs, Units, Value</i>	Monthly
➤ Clinical utilization management	➡	• <i>Cost per each type of case per physician</i>	Monthly

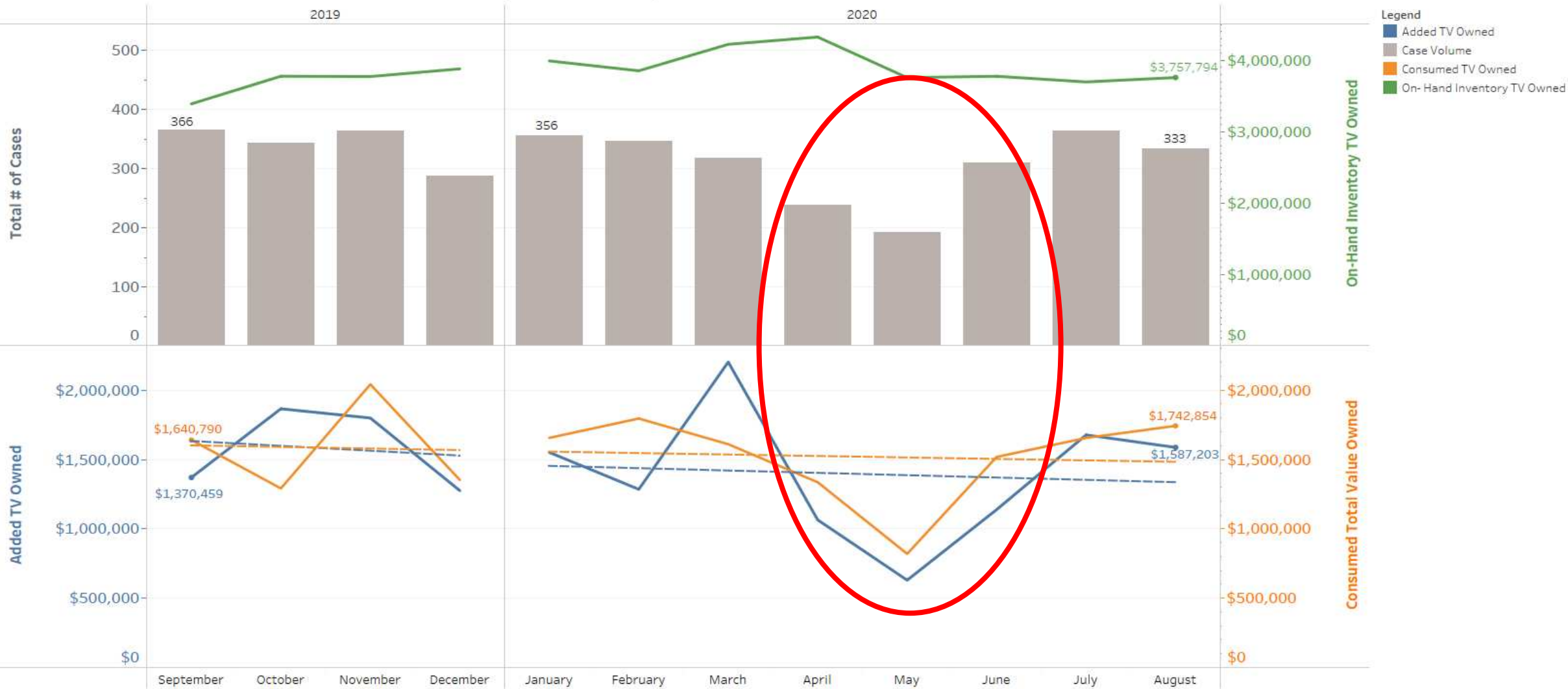
### ➤ Automated processes:

- ✓ Auditing & Reordering
- ✓ Receiving & restocking
- ✓ Expiration management
- ✓ Recall management
- ✓ Point of care documentation
- ✓ Item data management

### ➤ Key achievements:

- ✓ Full visibility of items from requisition to patient charting: **>90% accuracy**
- ✓ Aligned purchases with consumption: **excess inventory reduced by >60%**
- ✓ Waste through expirations nearly eliminated: **<0.5% of total inventory value**
- ✓ Increased patient safety: expired items never placed in patients, no stock-outs, and recalls tracked to individual patients in seconds

Owned Total On-Hand vs. Added and Consumed Values (Past 12 Months)





*Q&A*



*[www.vuemed.com](http://www.vuemed.com) ∞ [Imakhanik@vuemed.com](mailto:Imakhanik@vuemed.com)*



**IMPORTANT**

**Don't forget to complete the session survey  
in the mobile app**

**We need your input**

# Thank you for Attending



A Virtual Conference presented by AIM & RAIN  
9 - 10 December 2020

**Presentations will be available on-line soon. You will receive an email with a link when they are available.**